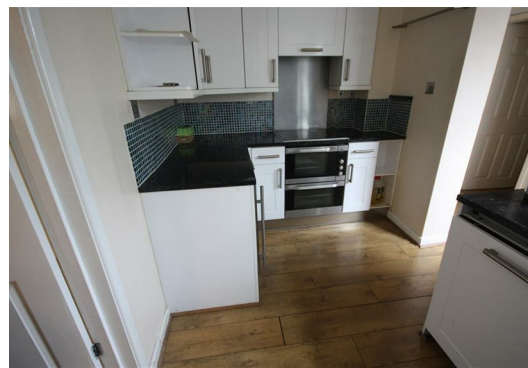
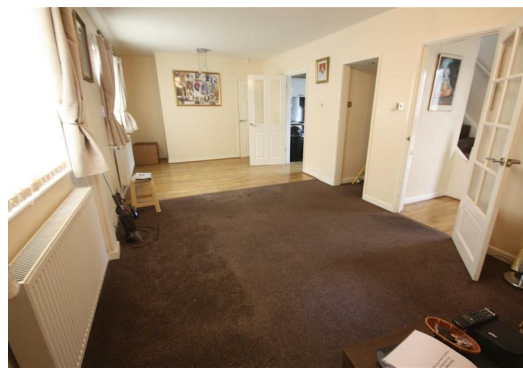
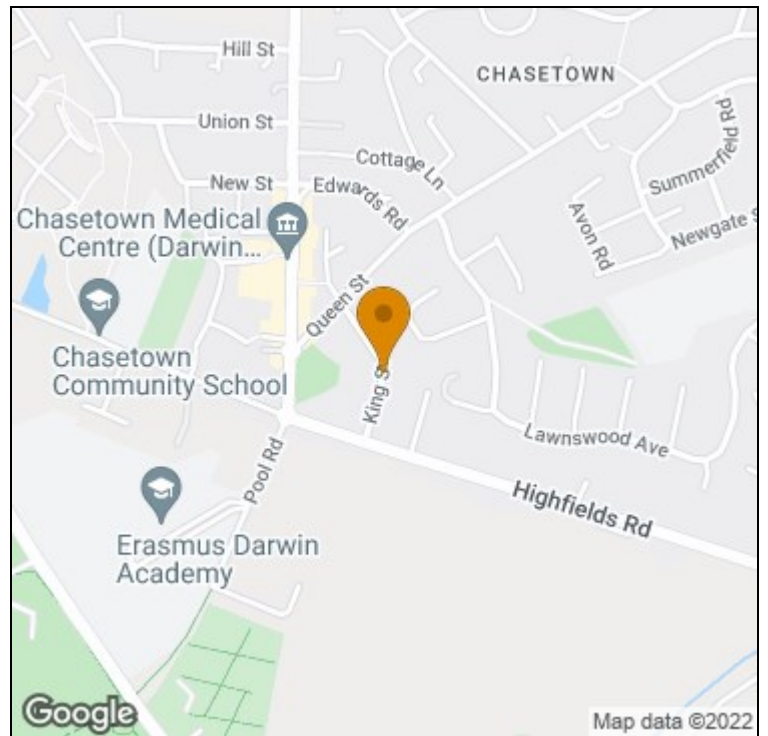
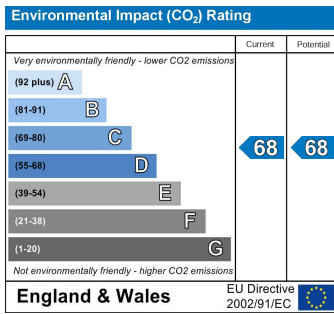
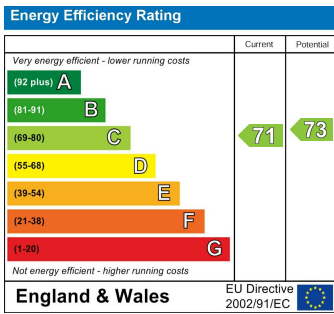




King Street,
Burntwood, Staffordshire, WS7 4QJ
£850 PCM



TO LET. Spacious 3 bedroom family home with added benefit of a large conservatory. This super family home is available now and comprises Hall, spacious lounge/Dining room. Modern Kitchen, utility room and downstairs W.C., large conservatory, on the first floor there are three bedrooms and modern bathroom. outside driveway and large rear garden. PETS CONSIDERED.



t: 01543251310 e: lichfield@newtonfallowell.co.uk

www.newtonfallowell.co.uk